



General Information

KEEP LEFT on a two-way road to allow traffic from the opposite direction to pass on your right and on a one-way road to allow vehicles behind you to overtake from your right.

WHEN TURNING LEFT, keep to the left side of the road you are leaving as well as the one you are entering. When turning right, move to the centre of the road you are leaving and arrive near the left side of road you are entering.

SLOW DOWN at road junctions, intersections, pedestrian crossings and road corners and wait until you are sure of a clear passage ahead. If you are entering a main road where traffic is not being regulated, give way to vehicles passing on your right.

DIRECTION INDICATORS Better use directions indicators instead of hand signals and both in case of any emergency.

DO NOT DRIVE on a one way road except in the direction permitted. Reversing into a one way street in the wrong direction, is also prohibited.

USE THE HORN only when essential and do not use it in a silence zone. Do not fit loud, multi-toned or harsh and shrill sounding horns or alarms in your vehicle. Vehicles with altered silencers are also prohibited on the road.

DO NOT BRAKE SUDDENLY except for safety reasons.

DO NOT CROSS THE YELLOW LINE dividing the road even while overtaking. On roads with defined lanes use appropriate indicator signal before changing lanes.

DO NOT BRAKE SUDDENLY except for safety reasons.



Mandatory Signs



STOP



GIVE WAY



NO ENTRY



ONE WAY



ONE WAY



VEHICLES PROHIBITED ALL MOTORVEHICLES PROHIBITED



TRUCKS PROHIBITED



BULLOCK & HAND CARTS PROHIBITED



BULLOCK CARTS PROHIBITED



TONGAS PROHIBITED



HAND CARTS PROHIBITED



CYCLE PROHIBITED



PEDESTRIANS PROHIBITED



RIGHT TURN PROHIBITED



LEFT TURN PROHIBITED



'U' TURN PROHIBITED



OVERTAKING PROHIBITED



HORNS PROHIBITED



NO PARKING



NO STOPPING OR STANDING



SPEED LIMIT



WIDTH LENGTH



HEIGHT LIMIT



LENGTH LIMIT



LOAD LIMIT



AXLE LOAD LIMIT



RESTRICTION ENDS
SIGN



COMPULSORY TURN
LEFT



COMPULSORY AHEAD



COMPULSORY TURN
RIGHT AHEAD



COMPULSORY AHEAD
TURN RIGHT



COMPULSORY AHEAD
OR TURN LEFT



KEEP LEFT



COMPULSORY CYCLE
TRACK



COMPULSORY SOUND
HORN



Informatory Signs



PUBLIC TELEPHONE



PETROL PUMP



HOSPITAL



FIRST AID POST



EATING PLACE



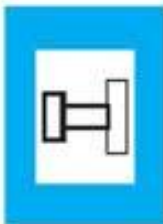
LIGHT REFRESHMENT



RESTING PLACE



THOROUGH ROAD



THOROUGH SIDE ROAD



PARK THIS SIDE



PARKING LOT SCOOTER & MOTOR CYCLE



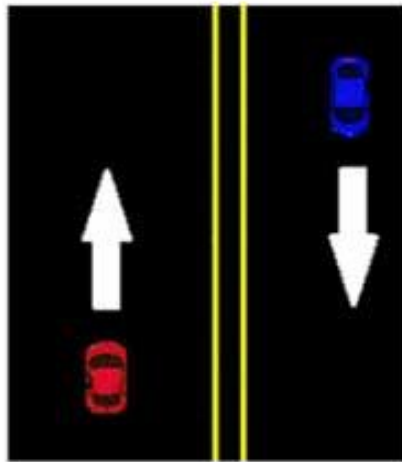
PARKING LOT CYCLE



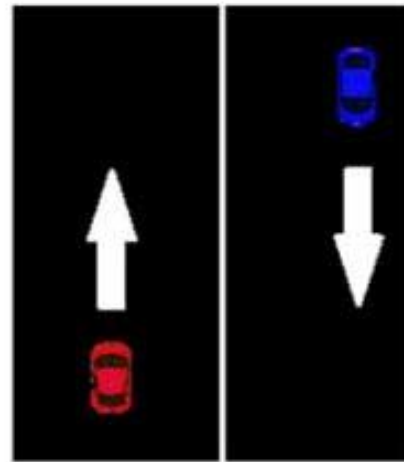
PARKING LOT CARS



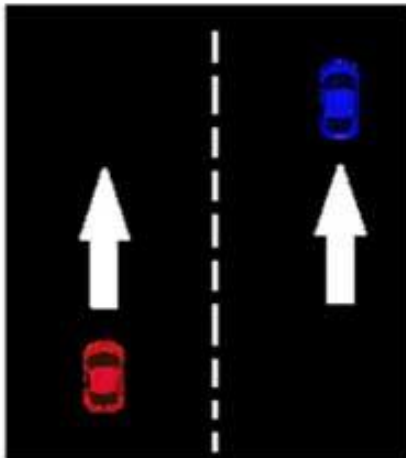
Road Signs



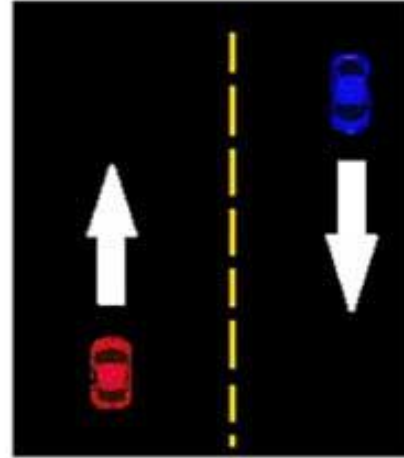
DOUBLE SOLID



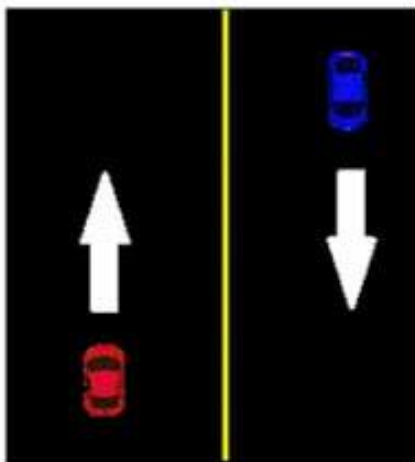
SIGNAL SOLID



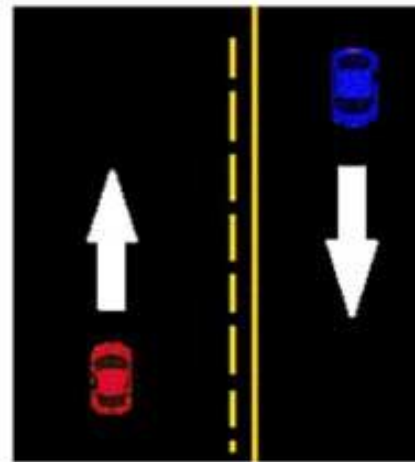
SINGLE BROKEN



SINGLE BROKEN



SINGLE SOLID



SOLID + BROKEN